

# Kökshanddukar - Storlekar och färger

30x50 cm

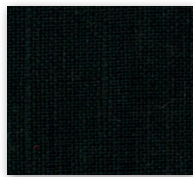
50% linne / 50% bomull



Art. 232 Vit



Art. 234 Grå



Art. 233 Svart

50x70 cm

50% linne / 50% bomull



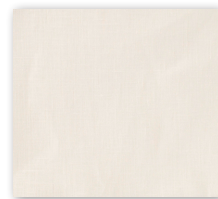
Art. 109 Vit



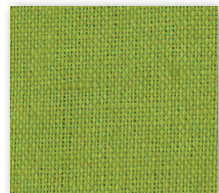
Art. 213 Grå



Art. 218 Cerise pms 233



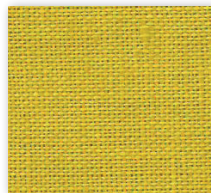
Art. 260 Oblekt



Art. 217 Grön pms 397



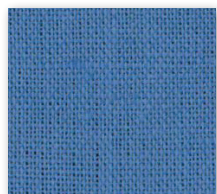
Art. 214 Röd pms 1925



Art. 216 Gul pms 110



Art. 219 Julröd



Art. 215 Blå pms 646



Art. 212 Svart



**TEKOTRYCK**

*You design - We print!*